

MXL TIMING PULLEYS

0.080" Trapezoidal Pitch

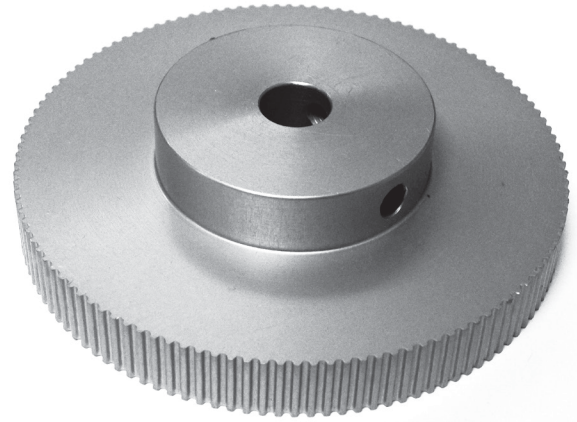
For 1/4" Wide Belts

Hub

Aluminum

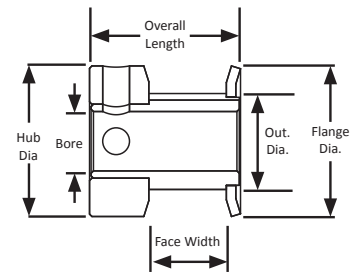
Clear Anodized

Finished Bore

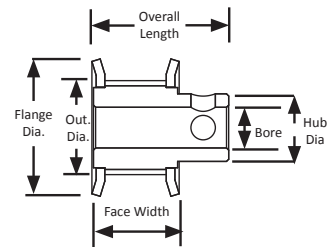


Part Number	No. of Teeth	Type	Pitch Dia. (in)	Out. Dia. (in)	Flange Dia. (in)	Bore (in)	Face Width (in)	Overall Length (in)	Hub Dia. (in)	Set Screw
10MP025-6CA1	10	6C	0.255	0.235	0.425	0.125	0.330	0.563	0.425	1 x 4-40
11MP025-6CA1	11	6C	0.280	0.260	0.450	0.125	0.330	0.563	0.450	1 x 4-40
12MP025-6CA1	12	6C	0.306	0.286	0.480	0.125	0.330	0.563	0.480	1 x 4-40
14MP025-6CA1	14	6C	0.357	0.337	0.530	0.125	0.330	0.563	0.530	1 x 4-40
15MP025-6CA2	15	6C	0.382	0.362	0.555	0.188	0.330	0.563	0.555	1 x 6-40
16MP025-6CA2	16	6C	0.407	0.387	0.580	0.188	0.330	0.563	0.580	1 x 6-40
18MP025-6FA2	18	6F	0.458	0.438	0.635	0.188	0.389	0.625	0.312	2 x 6-40 @ 90°
18MP025-6CA3	18	6C	0.458	0.438	0.635	0.250	0.337	0.563	0.635	2 x 6-40 @ 90°
20MP025-6FA2	20	6F	0.509	0.489	0.685	0.188	0.389	0.625	0.364	2 x 6-40 @ 90°
20MP025-6CA3	20	6C	0.509	0.489	0.685	0.250	0.337	0.563	0.685	2 x 6-40 @ 90°
21MP025-6FA2	21	6F	0.535	0.515	0.710	0.188	0.389	0.625	0.390	2 x 6-40 @ 90°
21MP025-6CA3	21	6C	0.535	0.515	0.710	0.250	0.337	0.563	0.710	2 x 6-40 @ 90°
22MP025-6FA2	22	6F	0.560	0.540	0.740	0.188	0.389	0.625	0.390	2 x 6-40 @ 90°
22MP025-6CA3	22	6C	0.560	0.540	0.740	0.250	0.337	0.688	0.740	2 x 6-40 @ 90°
24MP025-6FA3	24	6F	0.611	0.591	0.790	0.250	0.389	0.688	0.442	2 x 6-40 @ 90°
25MP025-6FA3	25	6F	0.637	0.617	0.815	0.250	0.389	0.688	0.468	2 x 6-40 @ 90°
28MP025-6FA3	28	6F	0.713	0.693	0.895	0.250	0.389	0.688	0.494	2 x 6-40 @ 90°
28MP025-6FA4	28	6F	0.713	0.693	0.895	0.313	0.389	0.688	0.494	2 x 6-40 @ 90°
30MP025-6FA3	30	6F	0.764	0.744	0.945	0.250	0.389	0.688	0.546	2 x 8-32 @ 90°
30MP025-6FA4	30	6F	0.764	0.744	0.945	0.313	0.389	0.688	0.546	2 x 8-32 @ 90°
32MP025-6FA3	32	6F	0.815	0.795	1.000	0.250	0.389	0.688	0.598	2 x 8-32 @ 90°
36MP025-6FA3	36	6F	0.917	0.897	1.105	0.250	0.389	0.688	0.676	2 x 8-32 @ 90°
40MP025-6FA3	40	6F	1.019	0.999	1.210	0.250	0.405	0.719	0.754	2 x 8-32 @ 90°
42MP025-6FA3	42	6F	1.070	1.050	1.260	0.250	0.405	0.719	0.806	2 x 8-32 @ 90°
44MP025-6FA3	44	6F	1.120	1.100	1.315	0.250	0.405	0.719	0.858	2 x 8-32 @ 90°
48MP025-6FA3	48	6F	1.222	1.202	1.420	0.250	0.405	0.719	0.936	2 x 8-32 @ 90°
50MP025-6FA3	50	6F	1.273	1.253	1.470	0.250	0.405	0.719	0.966	2 x 8-32 @ 90°
60MP025-6FA3	60	6F	1.528	1.508	1.730	0.250	0.405	0.719	1.222	2 x 8-32 @ 90°
60MP025-6A3	60	6	1.528	1.508	-	0.250	0.375	0.750	1.148	2 x 8-32 @ 90°
72MP025-6A3	72	6	1.833	1.813	-	0.250	0.375	0.750	1.195	2 x 8-32 @ 90°
72MP025-6A3	72	6	1.833	1.813	-	0.313	0.375	0.750	1.195	2 x 8-32 @ 90°
80MP025-6A4	80	6	2.037	2.017	-	0.313	0.375	0.750	1.500	2 x 8-32 @ 90°
90MP025-6A4	90	6	2.292	2.272	-	0.313	0.375	0.750	1.500	2 x 8-32 @ 90°
100MP025-6A4	100	6	2.546	2.526	-	0.313	0.375	0.750	1.500	2 x 8-32 @ 90°
120MP025-6A5	120	6	3.056	3.036	-	0.375	0.375	0.750	1.500	2 x 10-32 @ 90°

TYPE 6C



TYPE 6F



TYPE 6

